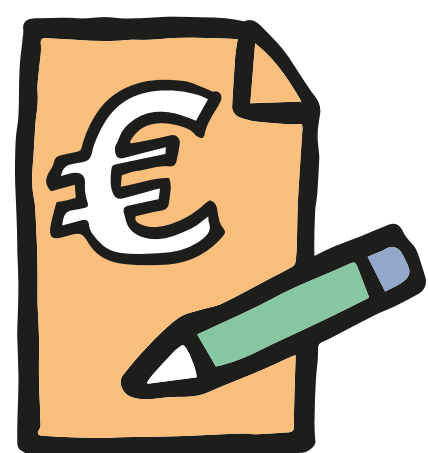


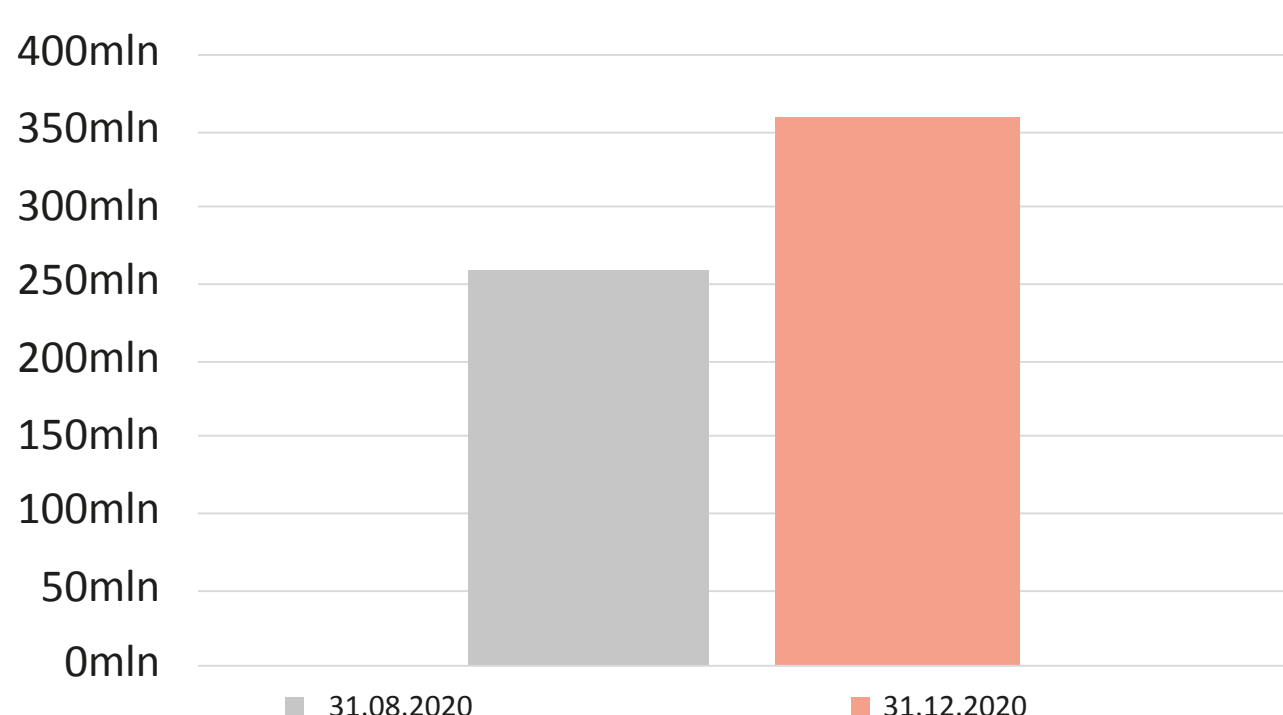
PON OT2



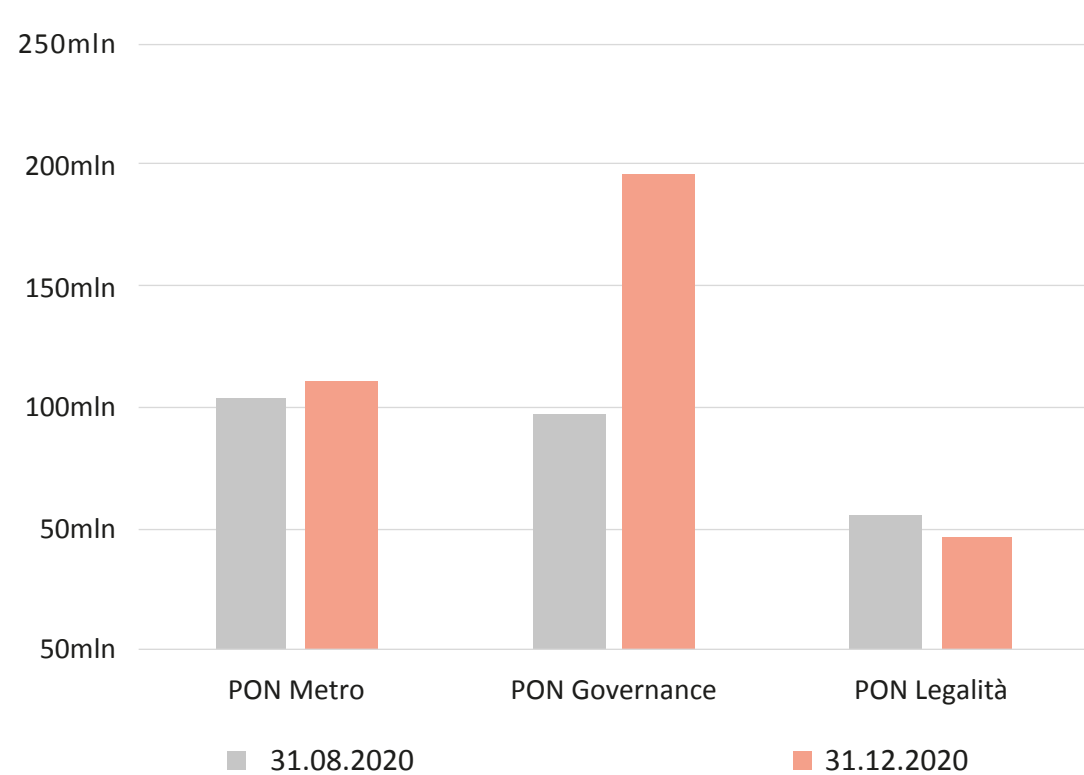
Totale impegni giuridicamente vincolanti

253
M€

353
M€



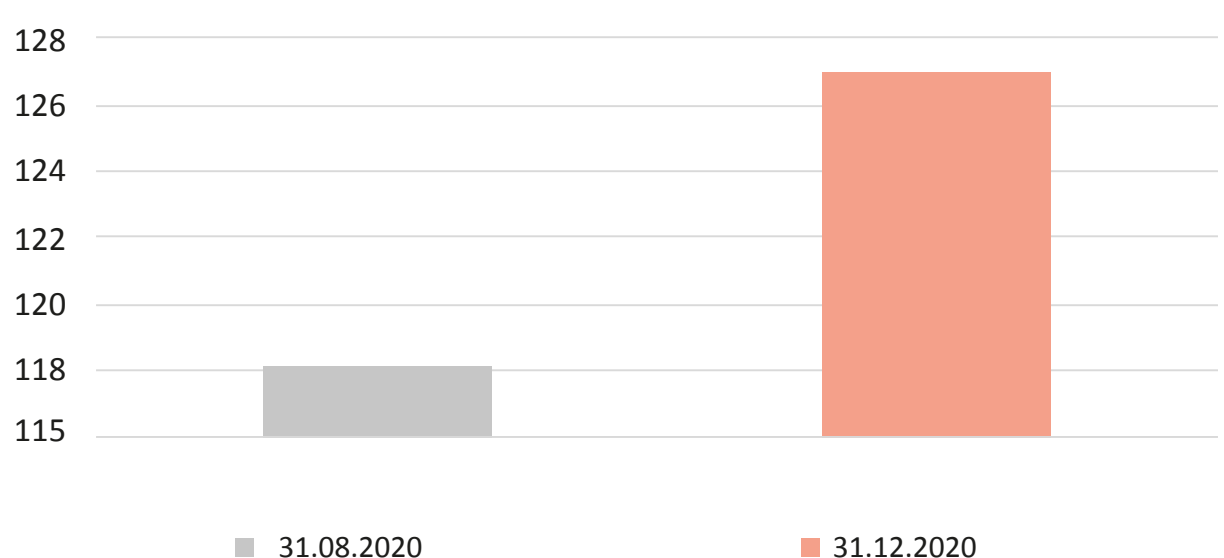
Impegni giuridicamente vincolanti per PON



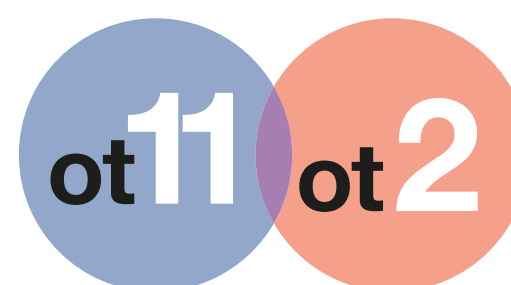
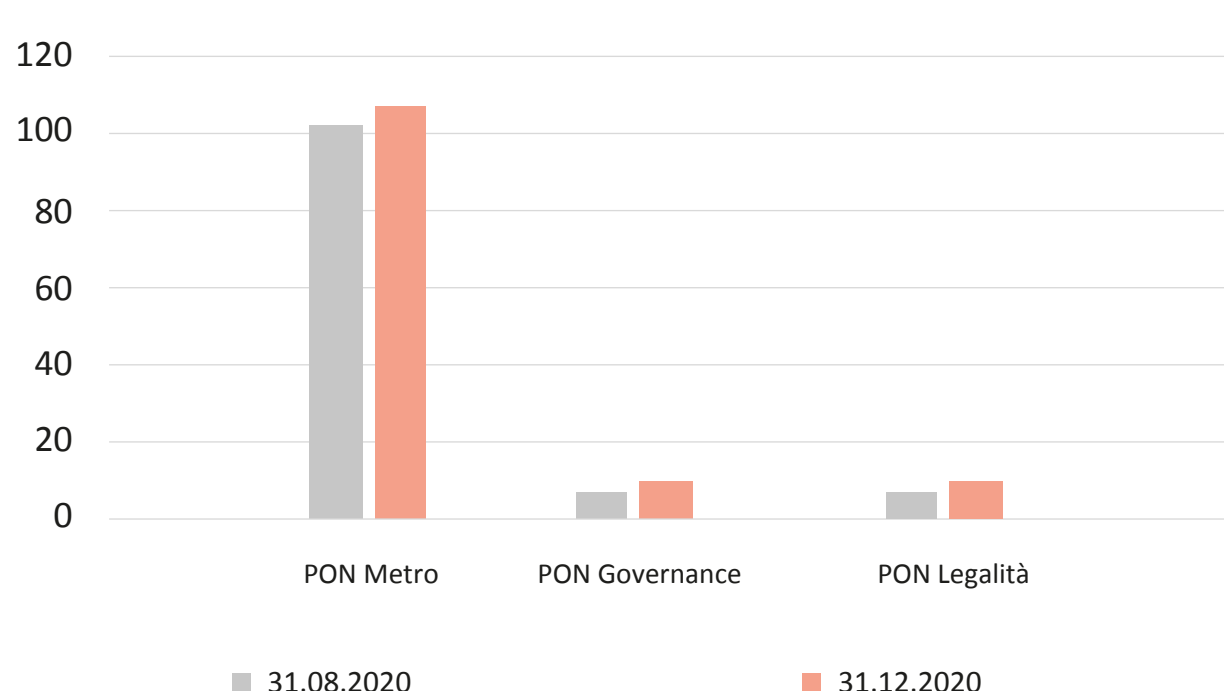
Numero progetti

118

127

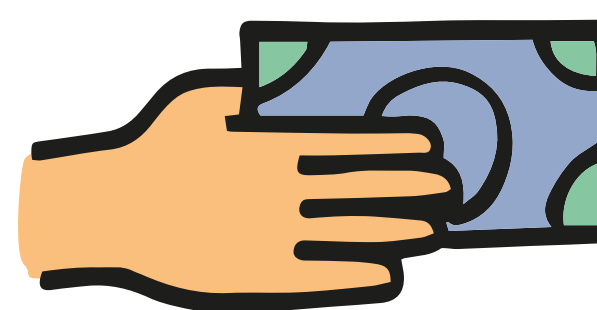


Numero di progetti per PON



OT11-OT2 | Rafforzamento della CAPACITÀ AMMINISTRATIVA e DIGITALIZZAZIONE della PA

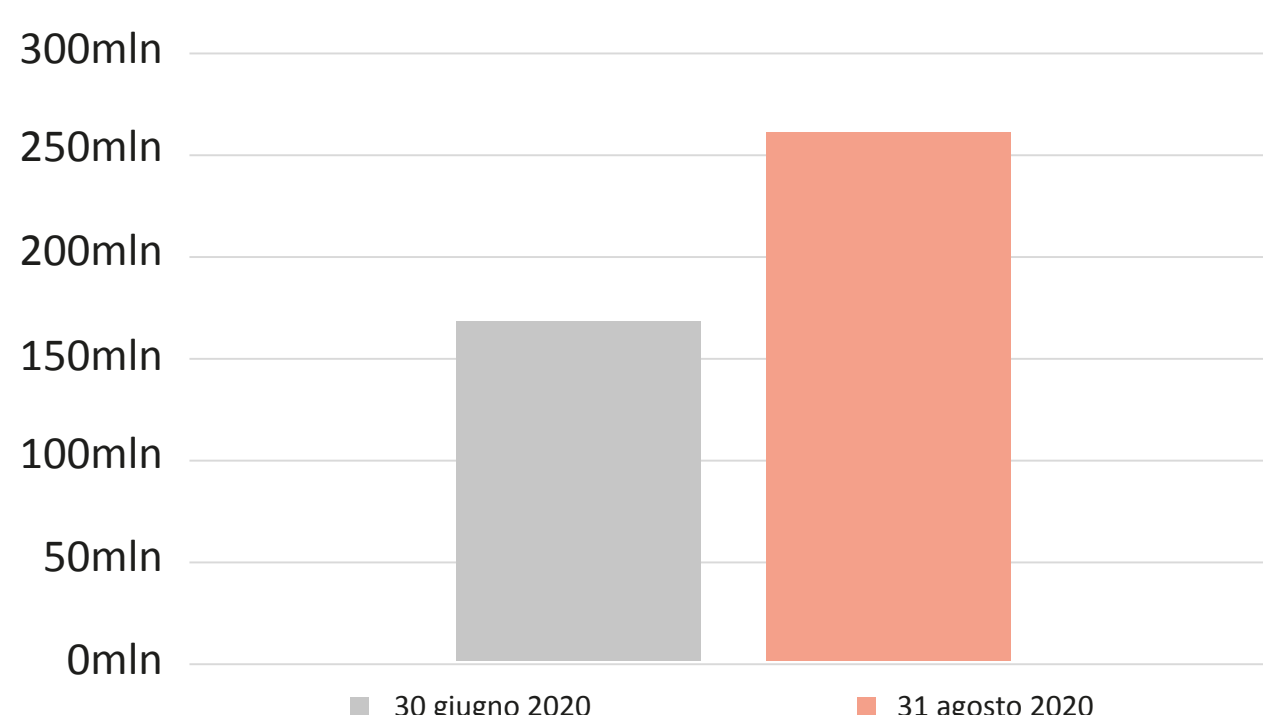
Comitato di Pilotaggio per il coordinamento degli interventi OT11 e OT2



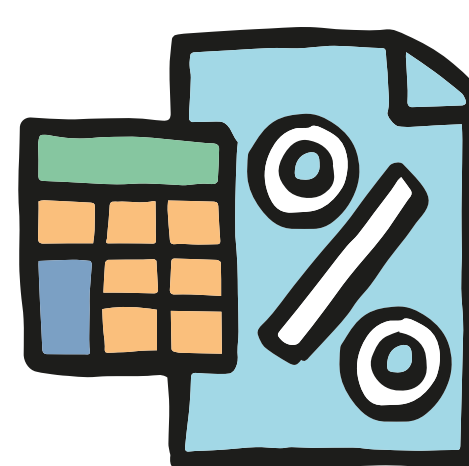
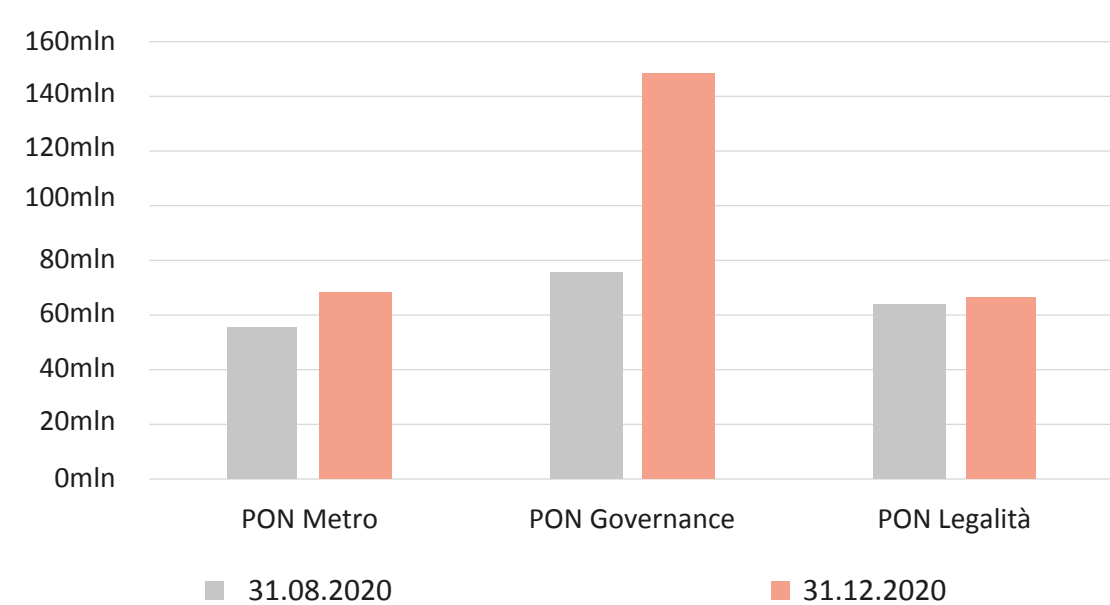
Totale pagamenti

170
M€

255
M€



Pagamenti per PON

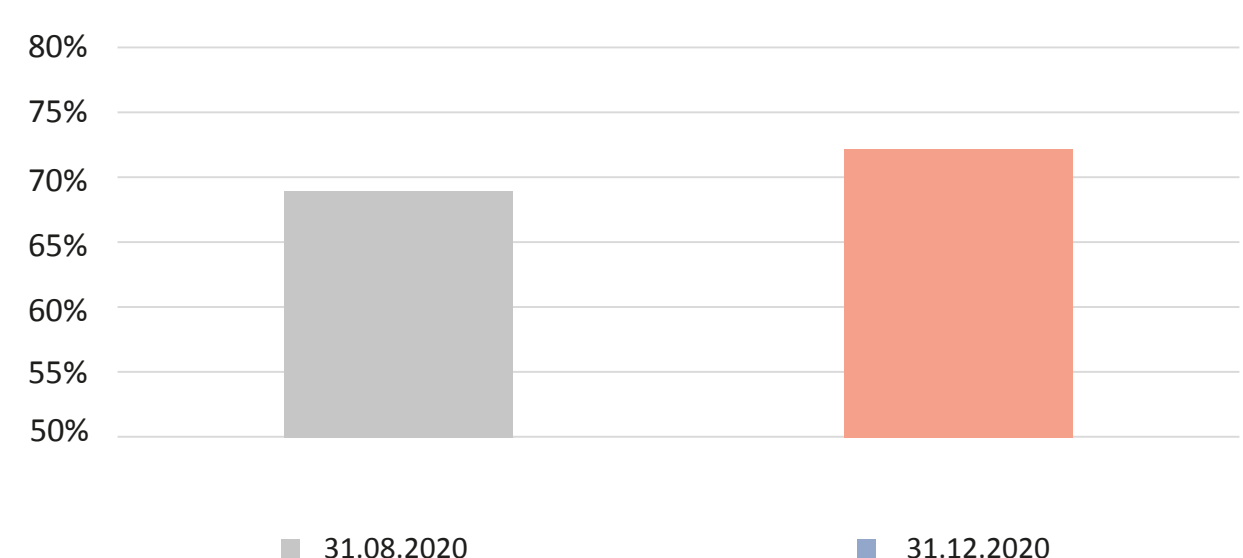


Capacità di utilizzo

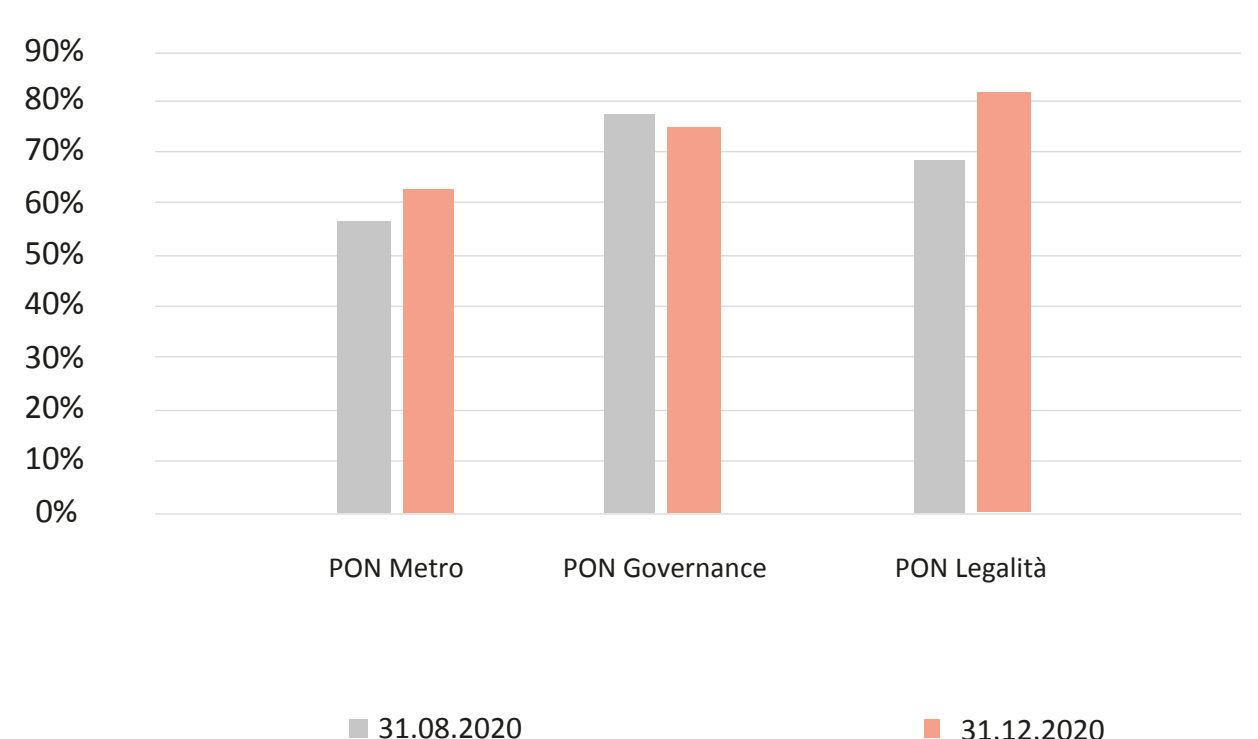
Rapporto tra pagamenti e impegni

67%

72%



Capacità di utilizzo per PON

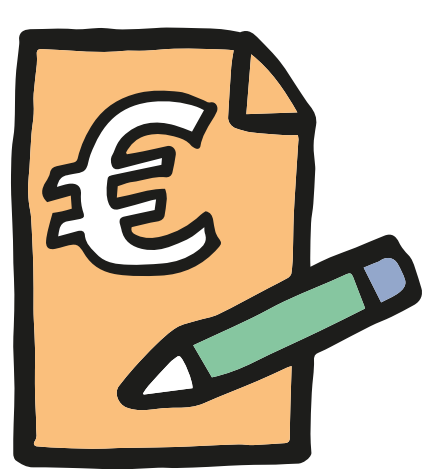


POR FESR OT2

ot11 ot2

Comitato di Pilotaggio
per il coordinamento
degli interventi OT11 e OT2

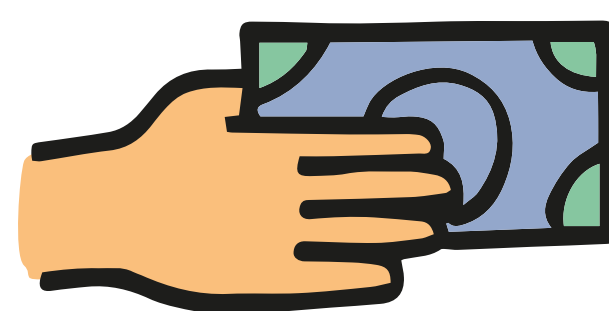
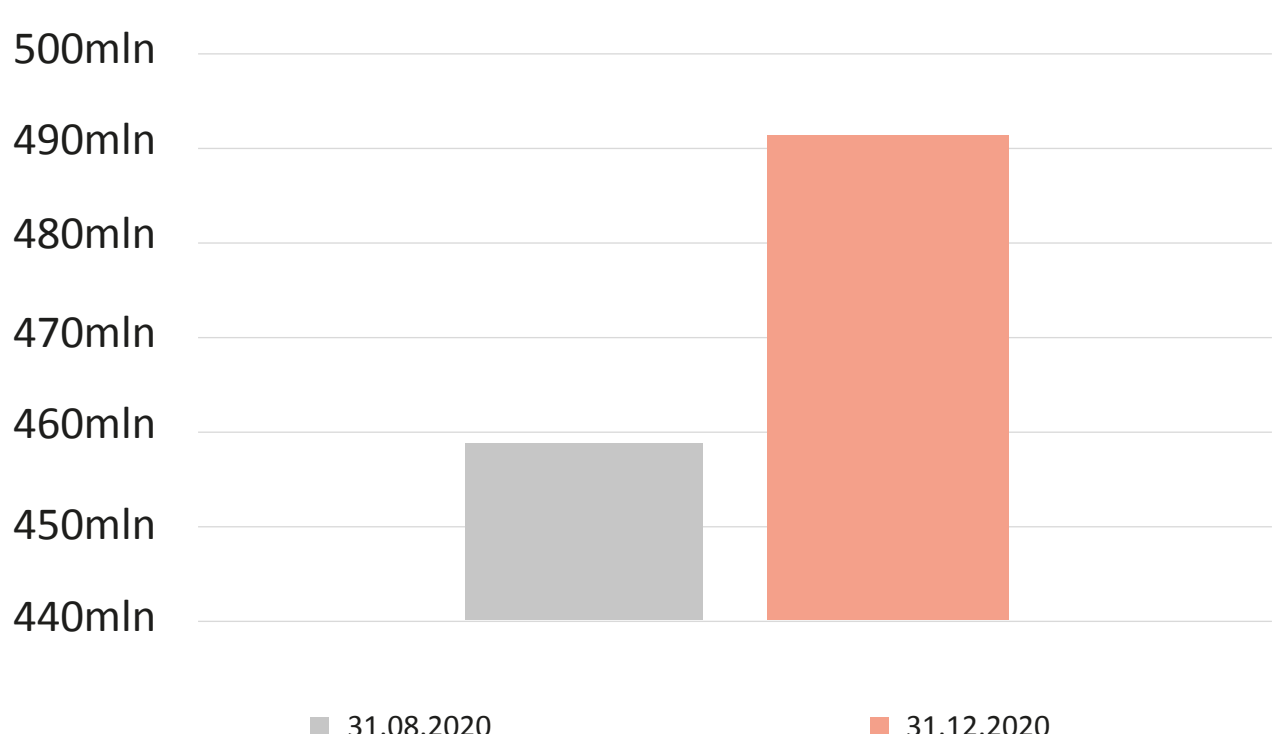
OT11-OT2 | Rafforzamento
della CAPACITÀ AMMINISTRATIVA
e DIGITALIZZAZIONE della PA



Totale impegni giuridicamente vincolanti

459
M€

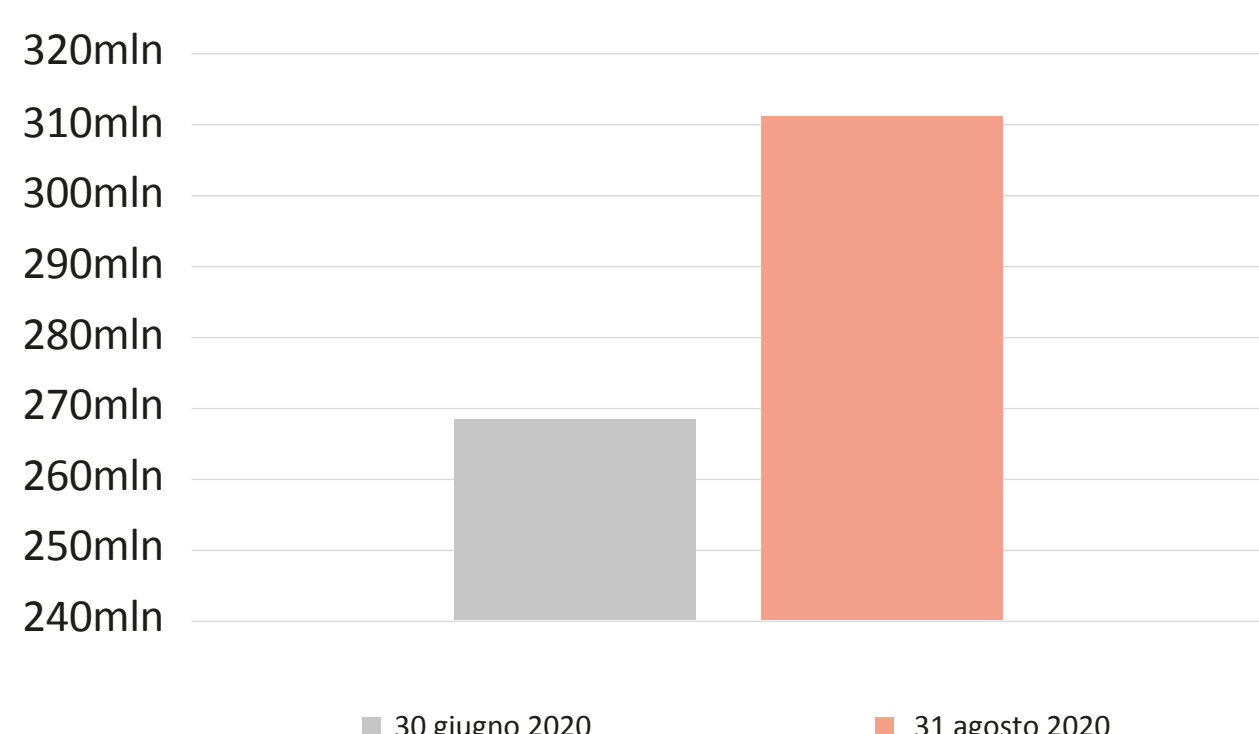
491
M€



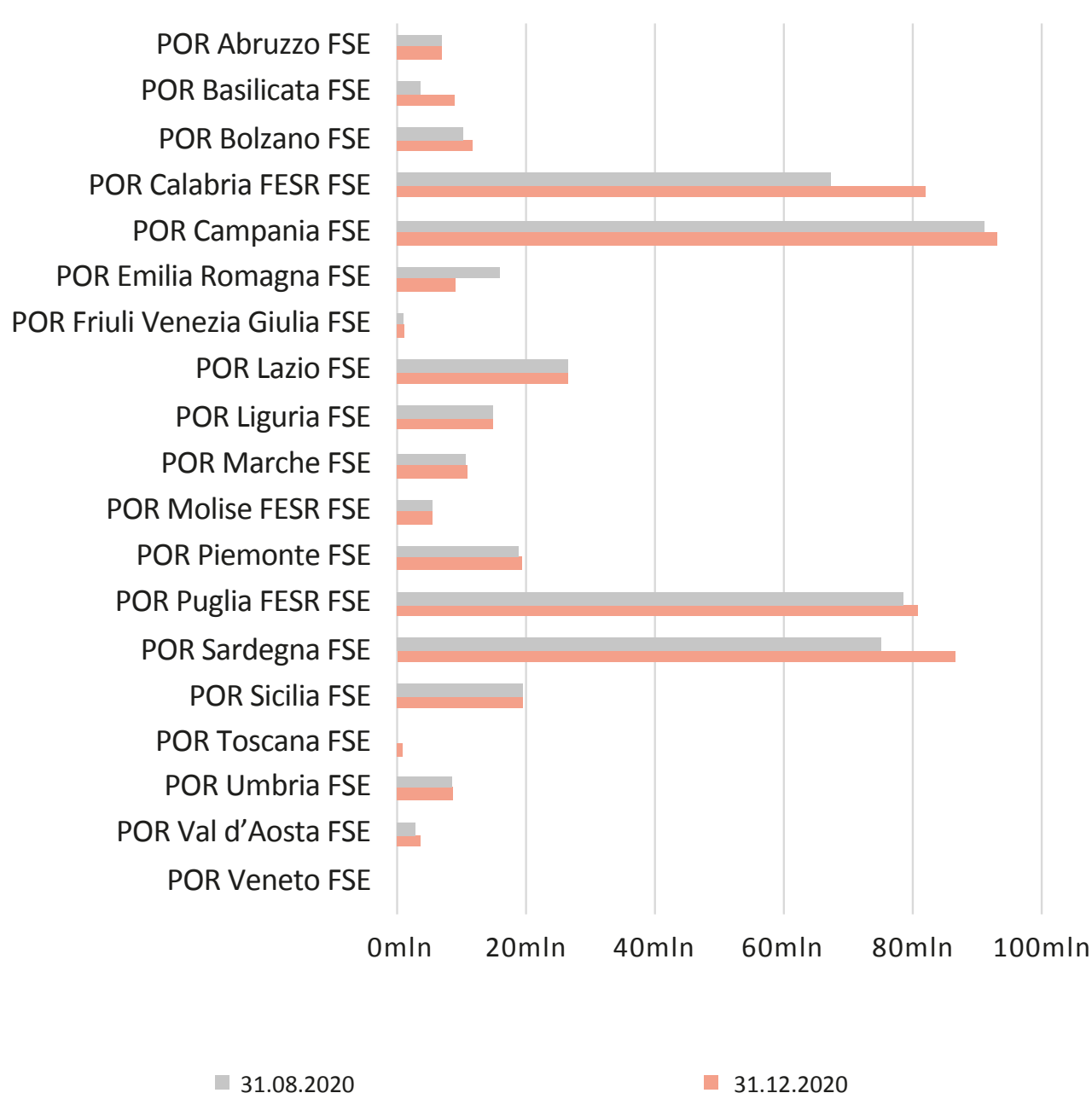
Totale pagamenti

269
M€

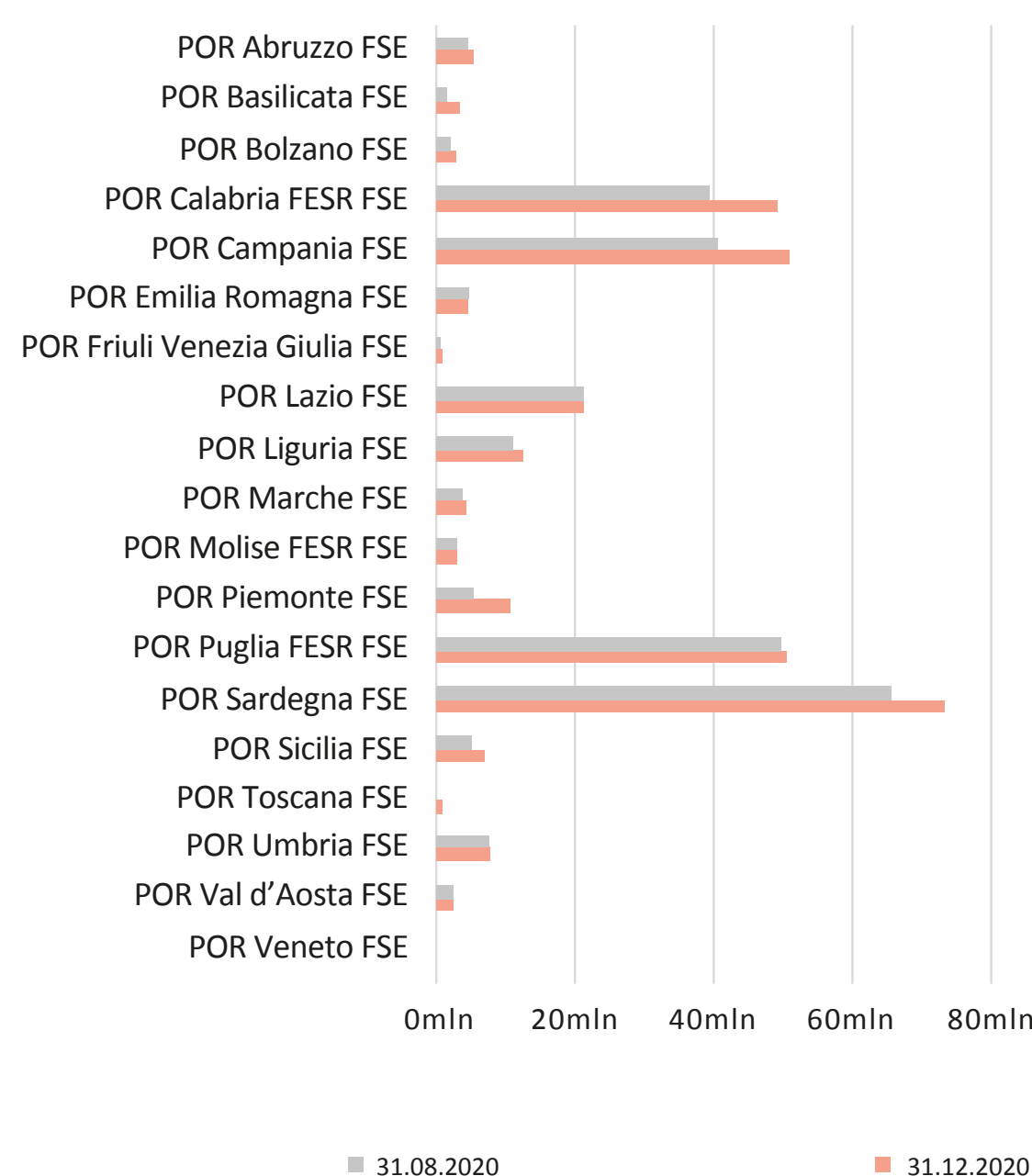
311
M€



Impegni giuridicamente vincolanti per POR



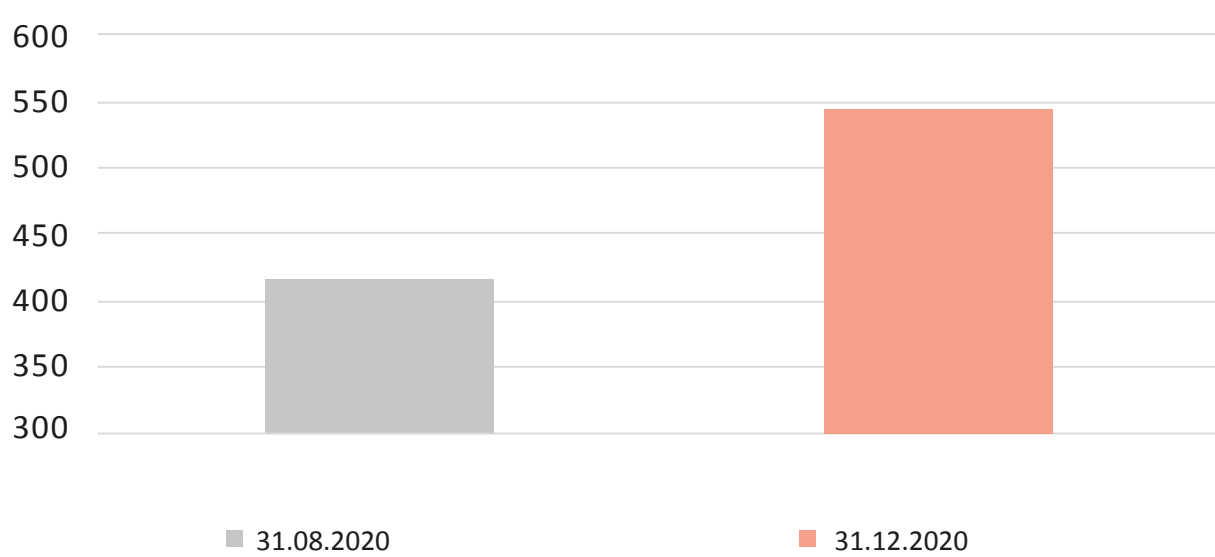
Pagamenti per POR



Numero progetti

417

545

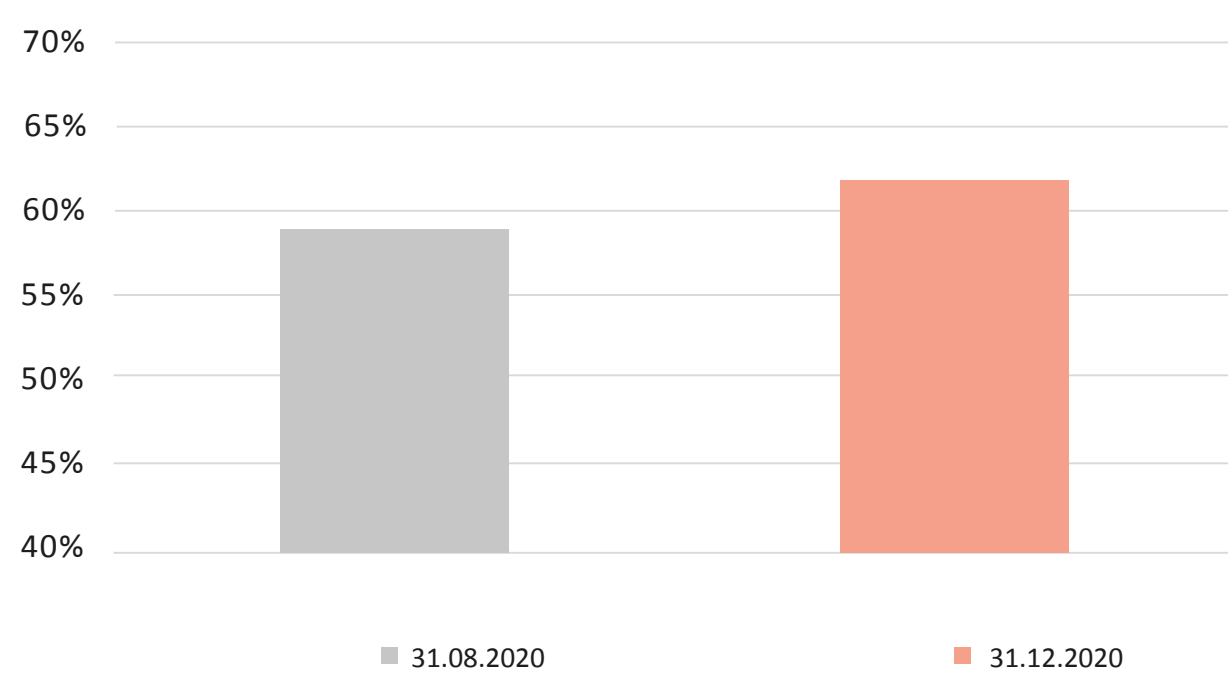


Capacità di utilizzo

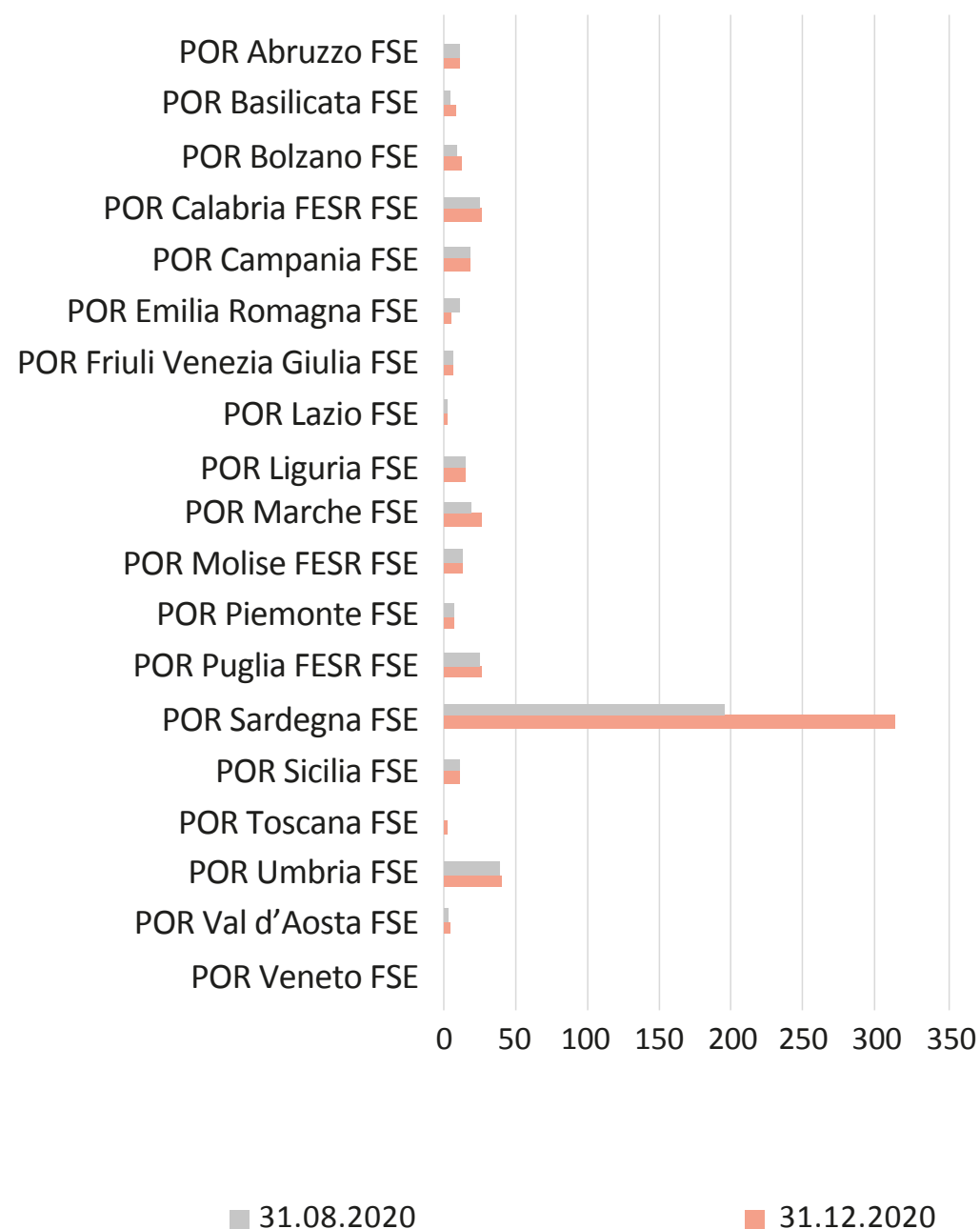
Rapporto tra pagamenti e impegni

58%

63%



Numeri di progetti per POR



Capacità di utilizzo per POR

